

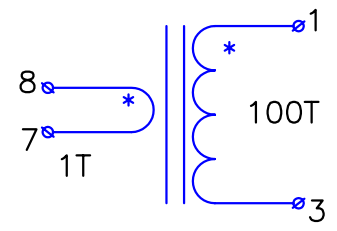
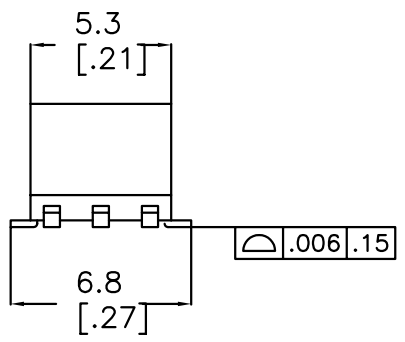
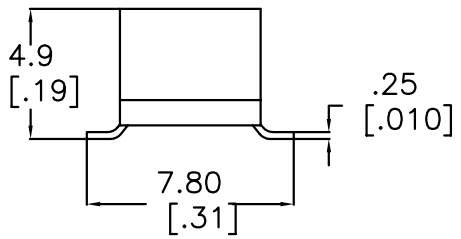
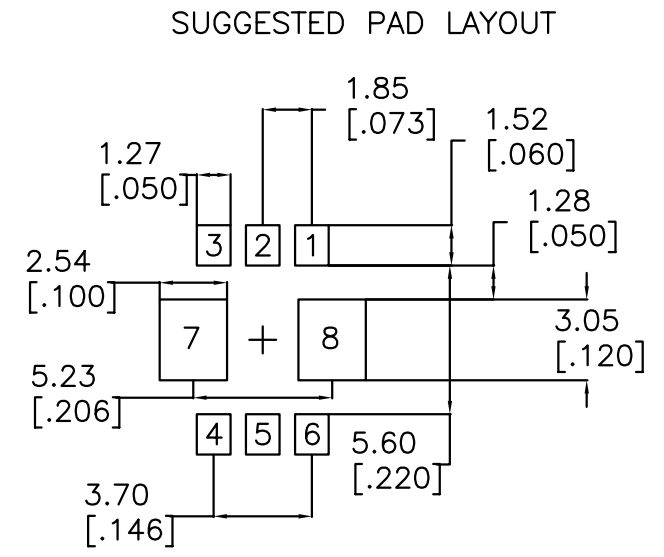
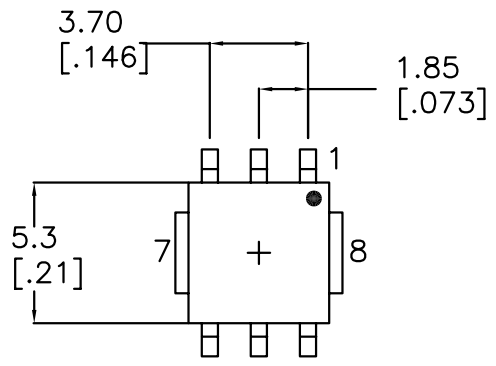
PN	TURNS RATIO	Sec'y L(mH) min	DCR Pri [8-7] max (mohms)	DCR Secy [1-3] max (ohms)
CS317-020	1:20	0.08	5.0	0.55
CS317-030	1:30	0.18	5.0	0.87
CS317-040	1:40	0.32	5.0	1.14
CS317-050	1:50	0.50	5.0	1.50
CS317-060	1:60	0.72	5.0	2.25
CS317-070	1:70	0.98	5.0	4.75
CS317-100	1:100	2.00	5.0	5.50
CS317-125	1:125	3.00	5.0	6.50

Note: Electrical Specifications at 25C | Temperature Rating -55C to +125C

- NOTES:
- MATERIAL UL RECOGNIZED 94V-0 FOR FLAMMABILITY.
 - CURRENT RATING PRIMARY 10 ARMS
 - DIELECTRIC STRENGTH 500 VRMS 60 HZ 5 SEC
 - Ciww [1,3] : [8,7] @100 Khz 50pF MAX
 - COMPONENT LEAD PLATING SN63/37 TYP.
 - TO ORDER RoHS PARTS ADD SUFFIX -NL
 - TO ORDER USE PN ABOVE. e.g., CS317-100
ADD SUFFIX -RL FOR REELS | ~550 pcs per REEL

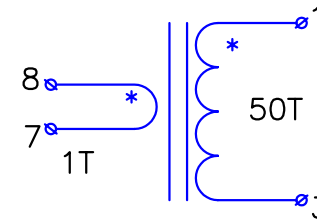
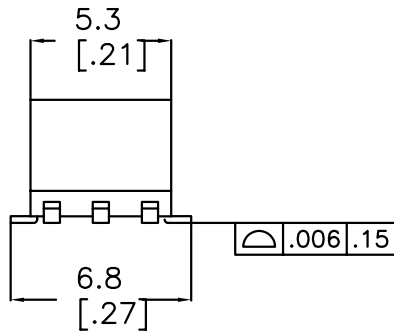
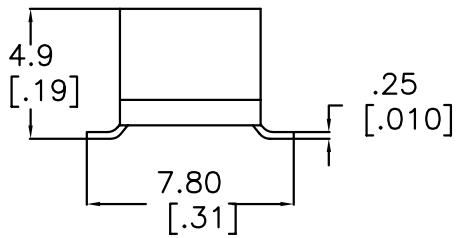
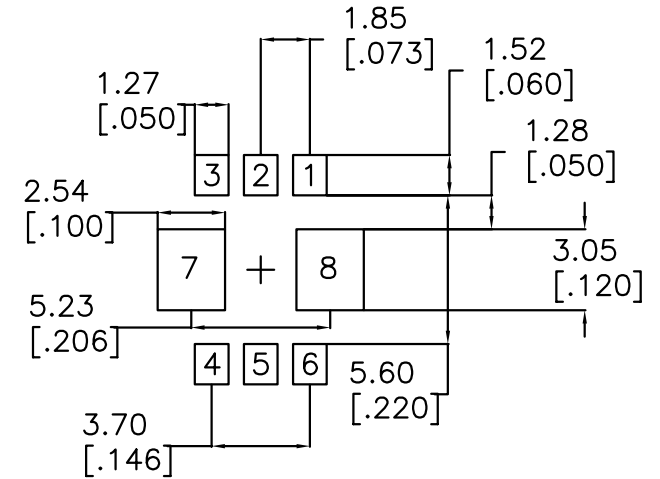
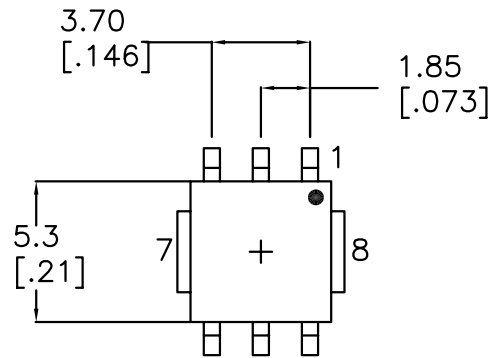
**RoHS
Compliant**

No.	DESCRIPTION		REVISIONS	DATE	APPR
THIRD ANGLE PROJECTION					
TOLERANCES UNLESS OTHERWISE INDICATED	DRAWN	SIGN	DATE	Drwg.No. HR-CS317-Series	
	CHKD	EL		TITLE: CS317 Series	
.XXX 0.200 .XX 0.38 ANGLE ±	APPR	JL	08/15/07	ISSUE A	REV 00
		HE		SIZE	SCALE 4:1



- NOTES:
- MATERIAL UL RECOGNIZED 94V-0 FOR FLAMMABILITY.
TEMPERATURE RATING OF 125C
CORE: FERRITE
 - ELECTRICAL SPECIFICATIONS [at 25C] See Table.
Turns [8-7] : [1-3] Polarity Lmh nom Lmh Min DCR [8-7] | [1-3]
1T : 100T 1,8 3.0mH nom 2.00mH Min 0.75 mohms max | 5.5 ohms max
 - Ciww [1,3] : [8,7] @100 Khz SRF (MHz)
150pF Max 500Khz min
 - Dielectric Withstand Voltage. 500Vrms 60Hz 5 Sec 1,3 : 8,7
 - RohS-5 || 63/37 Sn/Pb Pin Composition

No.	DESCRIPTION	REVISIONS	DATE	APPR
CHAMPS TECHNOLOGIES				
THIRD ANGLE PROJECTION		Champs No. CH1005-100		
TOLERANCES UNLESS OTHERWISE INDICATED		SIGN	DATE	Customer
.XXX ± .254	DRAWN	HE	07/11/07	Part #:
.XX ± .64	CHKD			Transf, Current Sense
.X ± 1.0	APPR			ISSUE A
ANGLE ±			SIZE	REV OO
			SCALE 4:1	



NOTES:

1. MATERIAL UL RECOGNIZED 94V-0 FOR FLAMMABILITY.

TEMPERATURE RATING OF 125C

CORE: FERRITE

2. ELECTRICAL SPECIFICATIONS [at 25C] See Table.

Turns [8-7] :	[1-3]	Polarity	Lmh nom	Lmh Min	DCR [8-7]		[1-3]
1T :	50T	1,8	0.70mH nom	0.50mH Min	0.75 mohms max		2.0 ohms max

F Ciww [1,3] : [8,7] @100 Khz SRF (MHz)
150pF Max 500Khz min

3. Dielectric Withstand Voltage. 500Vrms 60Hz 5 Sec 1,3 : 8,7

4. RohS-5 || 63/37 Sn/Pb Pin Composition

No.	DESCRIPTION	REVISIONS	DATE	APPR
CHAMPS TECHNOLOGIES				
DRAWN		SIGN	DATE	Champs No. CH1005-050
CHKD		HE	07/11/07	Customer Transf, Current Sense
APPR				Part #: ISSUE A REV 00
SIZE			SCALE 4:1	