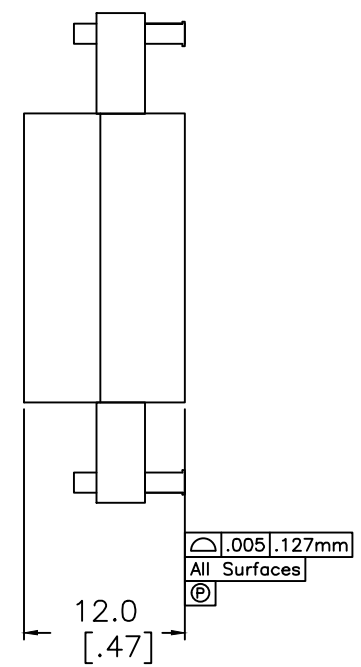
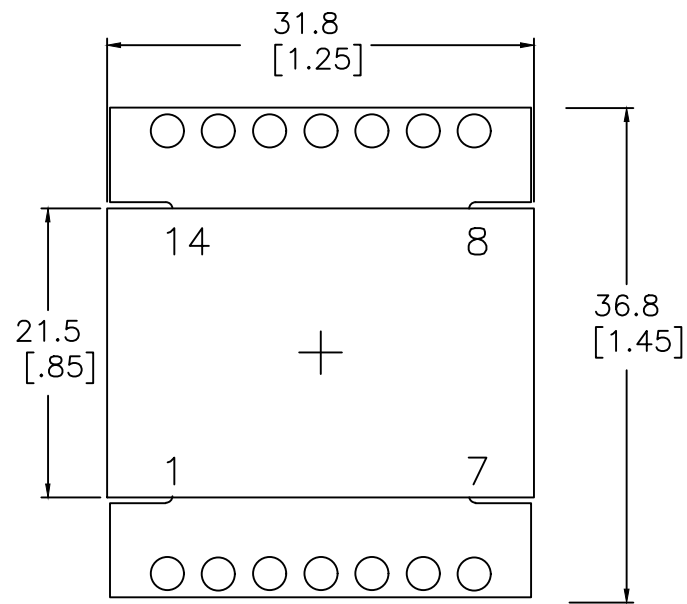
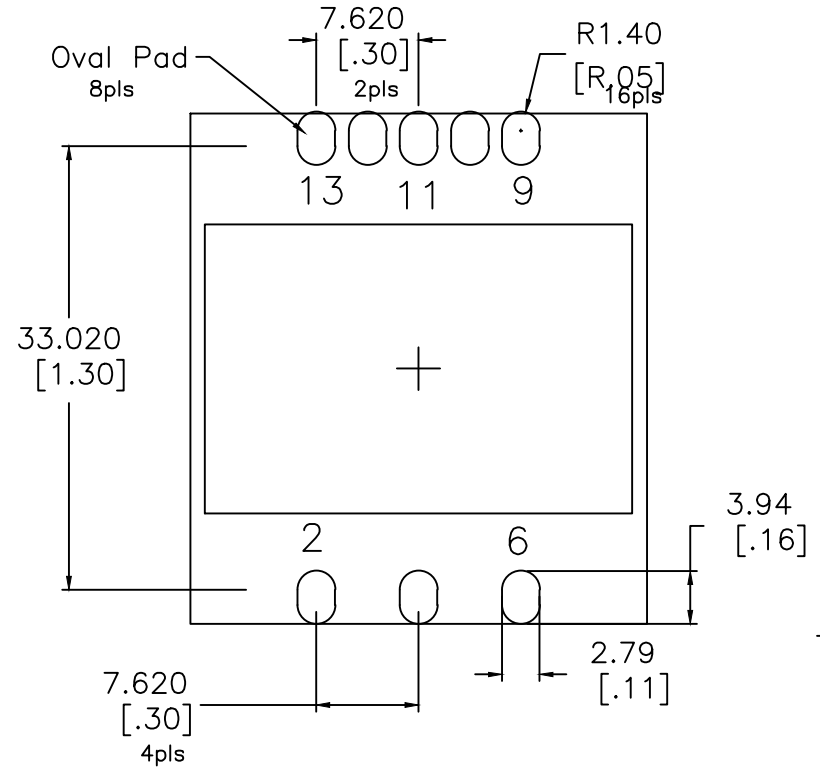


1 2 3 4 5 6 7 8

A
B
C
D
E
F



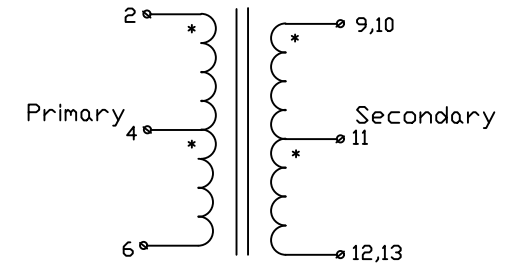
PAD LAYOUT [TOP VIEW]



Electrical Information:

1. TURNS RATIO [9-13] : [2-6] = 0.167 ±2%
2. INDUCTANCE [2-6] = 790 uH Nom @100kHz/1.0V
3. LEAKAGE INDUCTANCE [2-6] : SHORT 9,13 = 80nH Nom @100kHz
4. DCR [2-6]= 22 mohms Nom, DCR [9-13]= 0.6 mohms Nom,
5. CAPACITANCE 2,6 to 9,13 = 170 pF Nom @100kHz
6. DIELECTRIC ISOLATION: [2,6] : [9,13] > 1500 Vdc
 DIELECTRIC ISOLATION: [2,6] : CORE > 1500 Vdc
 DIELECTRIC ISOLATION: [9,13] : CORE > 500 Vdc
7. RoHS & Reach Compliant

SCHEMATIC



| | | | | | | | | | | |
|-----|-----------|------|------|--|---|--|--|--|--------------------------------------|-------------------|
| | | | | CHAMPS TECHNOLOGIES THIRD ANGLE PROJECTION | TOLERANCES UNLESS OTHERWISE INDICATED .XXX ± 0.254 .XX ± 0.58 .X ± 1.0 | | | DRAWN JL 11.21.25 CHKD PH APPR DT 114.11.21-01 | PN: 80R6-120101-8P SIZE SCALE 2:1 | ISSUE A REV 00 |
| No. | REVISIONS | DATE | APPR | | | | | | | |