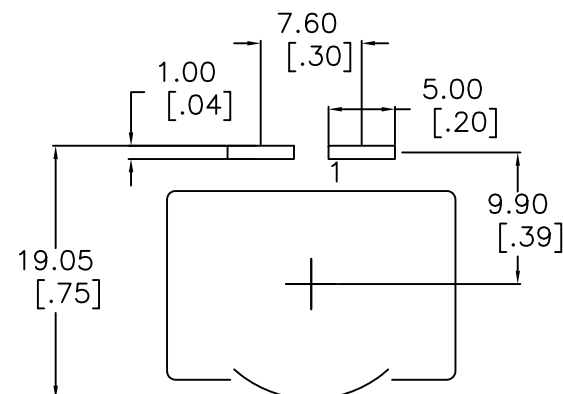
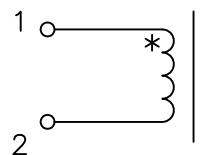


SUGGESTED THRU-HOLE LAYOUT



Schematic



ELECTRICAL INFO:

INDUCTANCE [1-2] = 30uH Nom, 27 Min. @100kHz/1.0V 4.0Adc

INDUCTANCE [1-2] = 25 uH Min. @100kHz/1.0V 4.5Adc

DCR [1-2] = 3.6 mohms Nom || 4.5Max

DIELECTRIC ISOLATION > 500 VDC [1-2] : CORE

SATURATION CURRENT @25C = 4.5Adc | @100C = 4Adc

HEATING CURRENT FOR 40C RISE AT 25C AMBIENT = 22 Adc

Operating Temp Range -55C to +130C [Inclusive of Temp Rise]

No.		DESCRIPTION	REVISIONS	DATE	APPR
THIRD ANGLE PROJECTION					
CHAMPS TECHNOLOGIES					
TOLERANCES/UNITS in MM UNLESS OTHERWISE INDICATED		SIGN	DATE	Champs-Tech PN PQI2050-30-HX-TH-10MM	
.XXX ± .25	DRAWN	DK	11.19.18	Customer	ISSUE
.XX ± .51	CHKD			Part #: INDUCTOR	A 00
.X ANGLE ± 1.0	APPR	HE		SIZE	SCALE 2:1