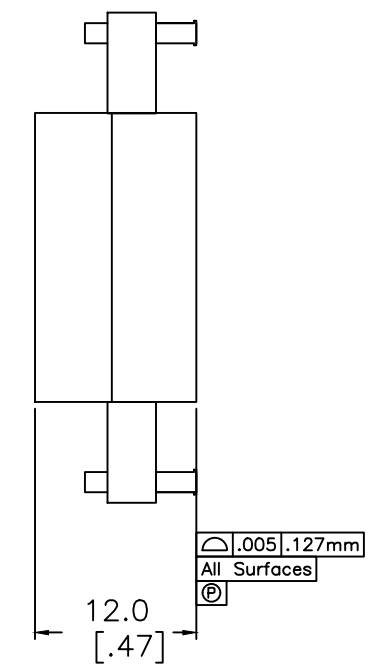
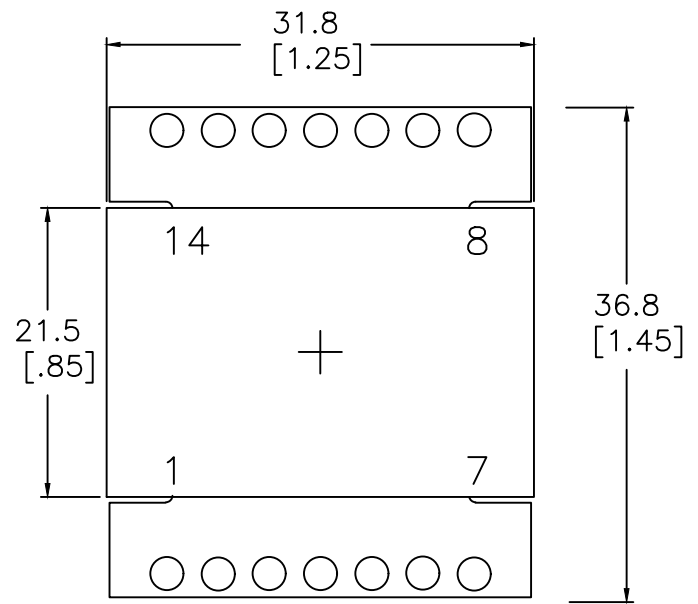
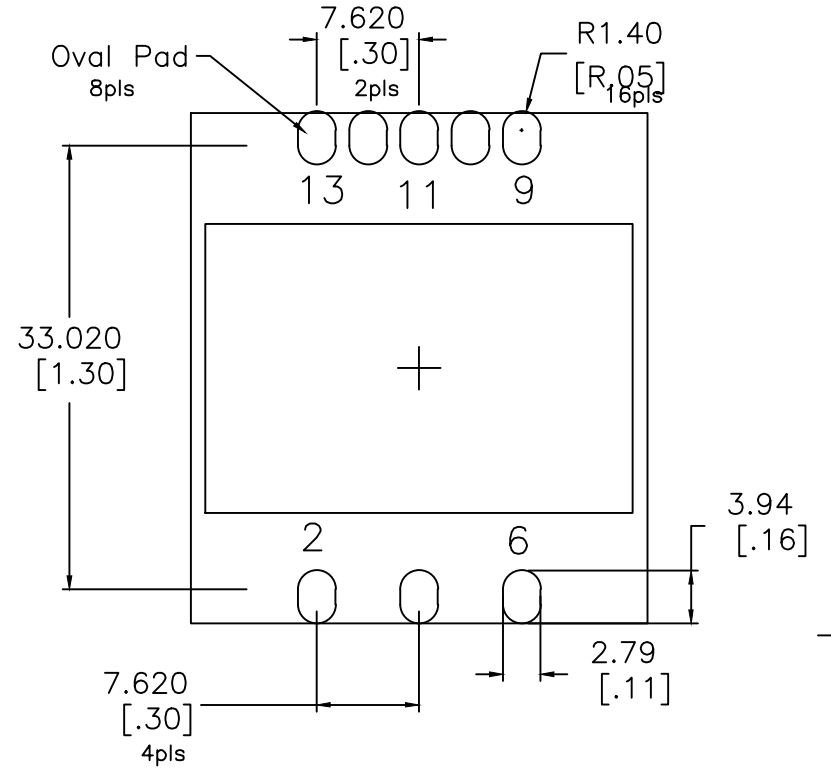


1 2 3 4 5 6 7 8

A
B
C
D
E
F



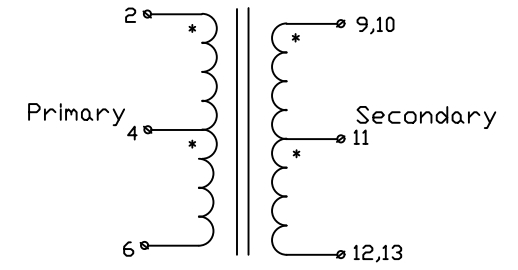
PAD LAYOUT [TOP VIEW]



Electrical Information:

1. TURNS RATIO [9-13] : [2-6] = 0.167 ±2%
2. INDUCTANCE [2-6] = 790 uH Nom @100kHz/1.0V
3. LEAKAGE INDUCTANCE [2-6] : SHORT 9,13 = 80nH Nom @100kHz
4. DCR [2-6]= 22 mohms Nom, DCR [9-13]= 0.6 mohms Nom,
5. CAPACITANCE 2,6 to 9,13 = 170 pF Nom @100kHz
6. DIELECTRIC ISOLATION: [2,6] : [9,13] > 1500 Vdc
 DIELECTRIC ISOLATION: [2,6] : CORE > 1500 Vdc
 DIELECTRIC ISOLATION: [9,13] : CORE > 500 Vdc
7. RoHS & Reach Compliant

SCHEMATIC



				CHAMPS TECHNOLOGIES	THIRD ANGLE PROJECTION 	TOLERANCES UNLESS OTHERWISE INDICATED			DRAWN JL 11.21.25	PN: 80R6-120101-8P	ISSUE A	REV 00
			.XXX ± 0.254			CHKD PH				SIZE	SCALE 2:1	
No.	REVISIONS	DATE	APPR				.XX ± 0.58	APPR DT 114.11.21-01				
			.X ± 1.0									